



NEWS

Asia CanTech 2016

GTB participated in Asia Can Tech 2016 in Malaysia with introducing a brand new inspection system called “Hallmarker for Can” to inspect the exterior of 2-piece cans. Although this was the first time GTB attended such an exhibition, the visitor's responses were really great. GTB received many positive reactions and inquiries regarding GTB's inspection systems.

They said “The accuracy of inspection is amazing and totally better than any inline inspection systems.” Let me explain what Hallmarker for Can is.



Hallmarker for CAN with Cylindrical Scanner

The features of Hallmarker for Can

1st, Highly Accurate Offline Inspection System to check for defects on the exterior of 2-piece cans.

2nd, Easy operation, just open a master file on the monitor, put the can you want to inspect on the machine and push the green button.

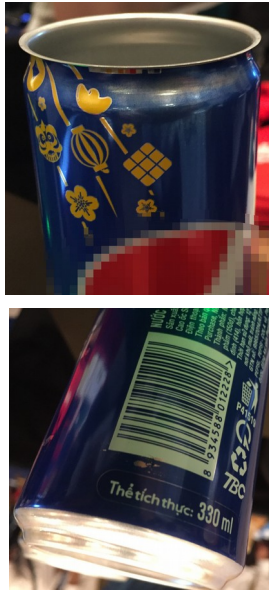
3rd, Automatically create the file of results either to print out or review.



If you would like more information about this product, please come to GTB's web site.

<http://www.en.gtb.co.jp/>

Sample can



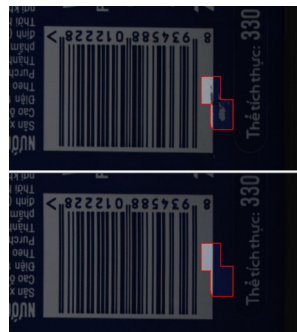
Scanned Image (there are blurred out parts)



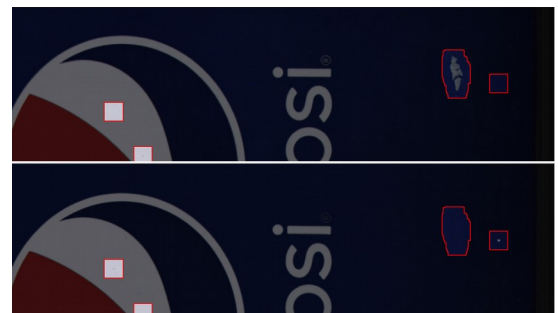
The inspection results



Ink faded on the edge of can

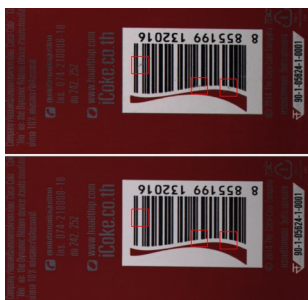


Ink peeling

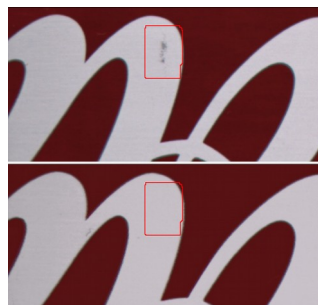


Dots and ink peeling

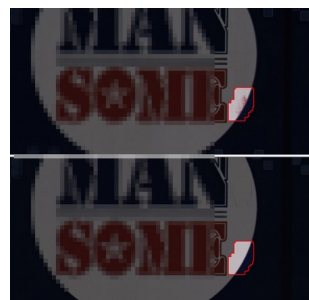
The inspection results from other samples



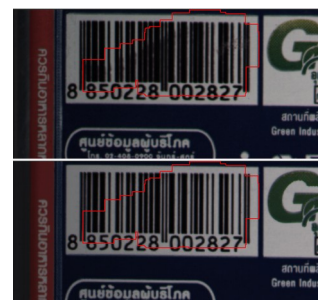
Scratching on Bar code



Dirt (black)



Dirt (red)



Collapsed bar code