

A brand new way of inspection using cameras

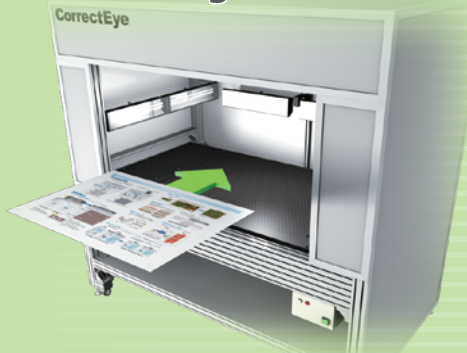


CorrectEye コレクトアイ

You no longer have to waste all that time and effort
For inspecting printed materials !

Perform a variety of inspections with easy steps !

① Put the target on the stand



CorrectEye
ALFA

② Then, you only need to "touch" !



Easy operation using the Wizard Method

Put the target for inspection on the stand.
Then, all you need to do is "touch" the capture button !

Entry system that is designed with the future in mind

Cameras are improving all the time.
Now, they have become input devices that can replace scanners.

From prepress to printing, it works in harmony with your digital work flow

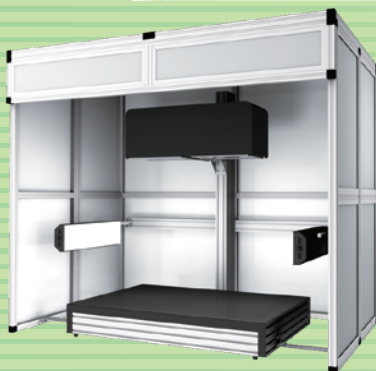
We can propose a refined system that promotes an error-free workflow.

Check your inspection results with the free viewer software

Freely distribute inspection results within your company or even with clients
with the attached viewer software that is free of charge.
It is reliable and secure through a sure method.

Photographic stand with absorbing function

The photographic stand has the function to absorb low
frequency noise, so that even a "wet copy" on thin gauge
paper can be captured.

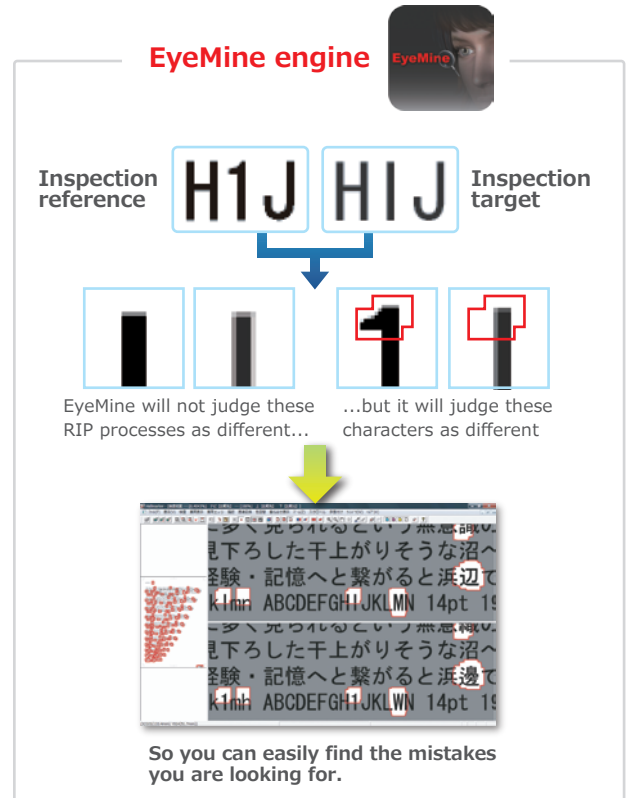
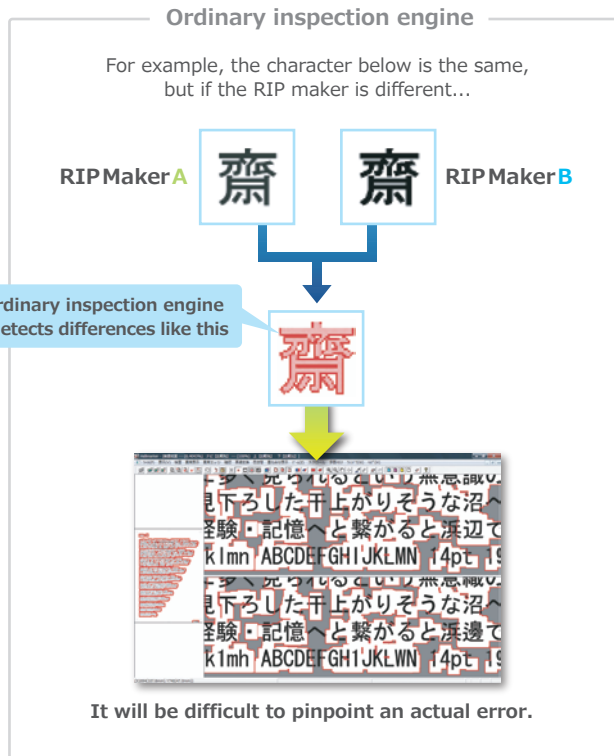


CorrectEye
BRAVO

Inspection engine "EyeMine"

CorrectEye includes the inspection engine, EyeMine, which is developed in-house. An ordinary engine will detect the slightest differences in concentration and pixel. However, if the inspection engine detects all those differences as an error, it will be a problem.

This is where EyeMine comes into play with its almost human sensibility.



● Comparing two papers

Place the two papers side by side in the correct area and start the inspection with one touch.

➔ Position the two documents you are comparing and touch the "capture button" to start. It will automatically inspect and manages the two documents for you.

Easy 1-touch operation!

Touch

Capture button

Confirm results

Inspection results

➔ A sheet with repeated images and a single image can be inspected together by placing them side by side and touching the "capture button". (It will automatically inspect and manages everything in the sample image for you.)

Easy 1-touch operation!

Touch

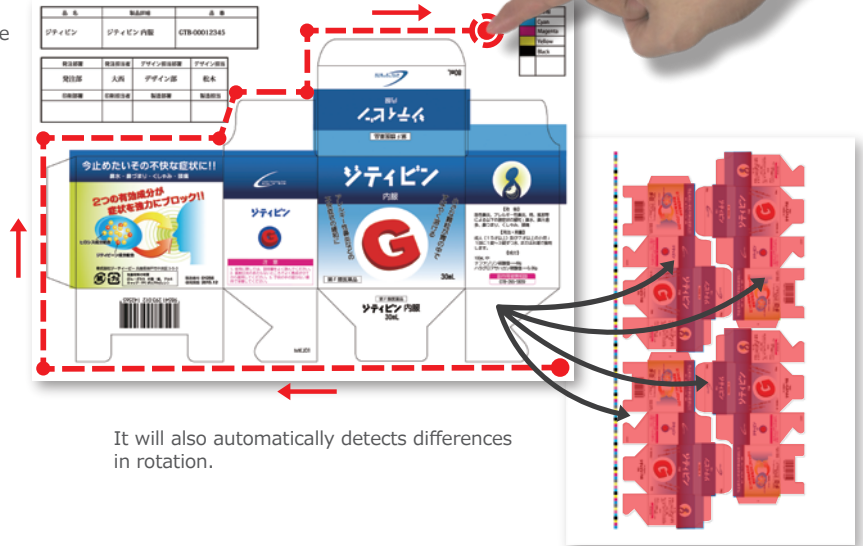
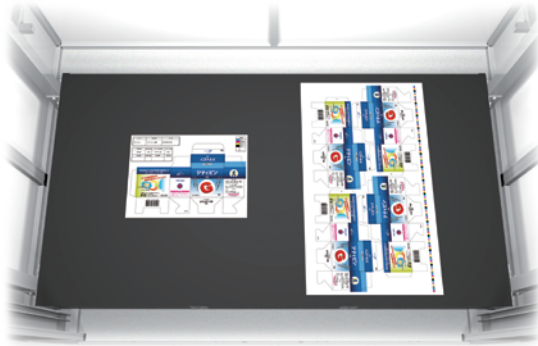
Capture button

Confirm results

Inspection results

● Complex paginated shapes like boxes

Even with complicated shapes like boxes, you can still indicate the desired area easily on a single image and begin inspection.



It will also automatically detect differences in rotation.

● Digital data(CMYK) and Printed paper(RGB)

It's possible to inspect different media output such as digital files and printed materials.

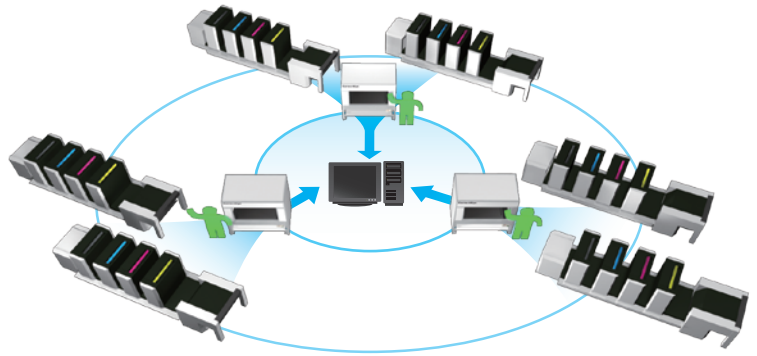
Digital file (8bitTIFF)



Printed Paper

● Support multiple printers connection (Support only ALFA 64bit)

Instead of capturing each papers individually and inspecting them one by one, it is possible to capture all the pages first, and then inspect them in batch.



Please note that you will have to have the ALFA series and upgrade to the server version in order to use the feature mentioned above.

● Check the inspection result with the FREE Hallmark Viewer



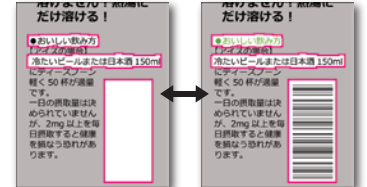
HallmarkViewer

Inspection results are confirmed with the exclusive "HallmarkViewer" viewer software that is free of charge.

For example, with a distortion inspection, put the sample image on the distortion display (blinking display) and the errors will be circled in the color of your choice. Also a halftone display can be set for sections with no deviation, so you can check the results without overlooking any part.

This is a free installable software, so the person in charge and the clients can easily confirm the inspection results on their PCs.

Displayed alternately to check for deviations

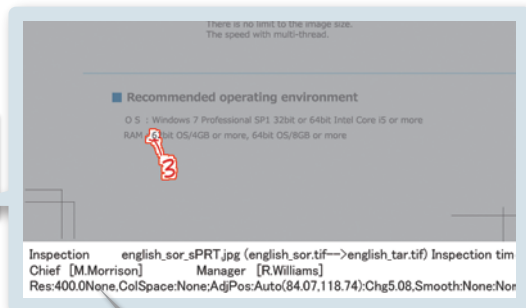


Inspection reference Inspection target

Result file



Confirm with Print



Print the inspection results with verification which includes : date, inspected image, the inspector's name and the inspection setting.

Use it as an effective sales tool by sharing of inspection results through shared folders in the company, or share them with clients and remote branch offices via mail attachments.



● Specification

	Enable inspection size
A3+(1camera)	453 × 328mm
BRAVO(2cameras)	636 × 469mm
ALFA(4cameras)	939 × 636mm
ALFA(8cameras)	1091 × 788mm
ALFA(8cameras)	1280 × 940mm

(Suitable for 300dpi)

Size, Weight

- **A3+** ————— 765(W) × 620(D) × 1040mm(H) / 19kg
- **BRAVO** ————— 1400(W) × 950(D) × 1250mm(H) / 100kg
- **ALFA** ————— 1800(W) × 1300(D) × 1900mm(H) / 250kg

Power source

- 100V15A

Product Structure

- Inspection machine
- Inspection software : CorrectEye(Hallmarker Special Edition)
- PC/Touch panel monitor
- Viewer software : HallmarkViewer
(Free inspection confirming software that can be circulated)

Option for color profile creation and color space correction

It is possible to inspect between CMYK, RGB, Gray scale

Option for inspection between digital data

This option is to inspect digital data after RIP.

CorrectEye A3+



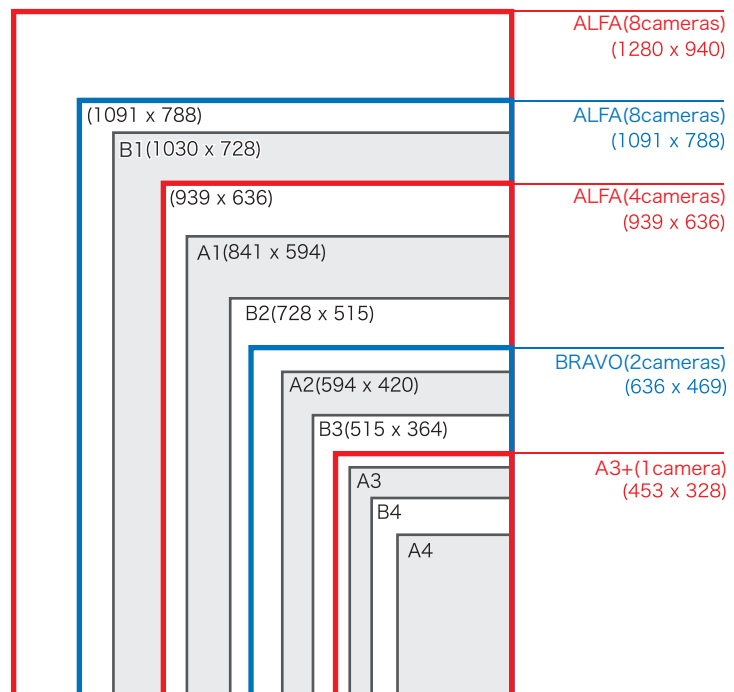
● Inspection size

Standard Paper Sizes

A0	1189 × 841
A1	841 × 594
A2	594 × 420
A3	420 × 297
A4	297 × 210
B0	1456 × 1030
B1	1030 × 728
B2	728 × 515
B3	515 × 364
B4	364 × 257
A3 Plus	453 × 328*
A3 Wide	530 × 329

*Sometimes the size may differ

CorrectEye Photographable size



[Developer]
GTB Co., Ltd.
http://www.gtb.co.jp
intcontact@gtb.co.jp

Main Headquarters:
3-5-3, Kitanomachi, Chuo-ku, Kobe City,
650-0002, Japan
Tel: +81(0)78 (265) 5385 Fax: +81(0)78 (265) 5389

Tokyo Office:
Kameda Bldg. 3, 1F, 1-2-15, Uchi-Kanda,
Chiyoda-ku, Tokyo 101-0047, Japan
Tel: +81(0)3 (6380) 2442 Fax: +81(0)3 (6380) 2444